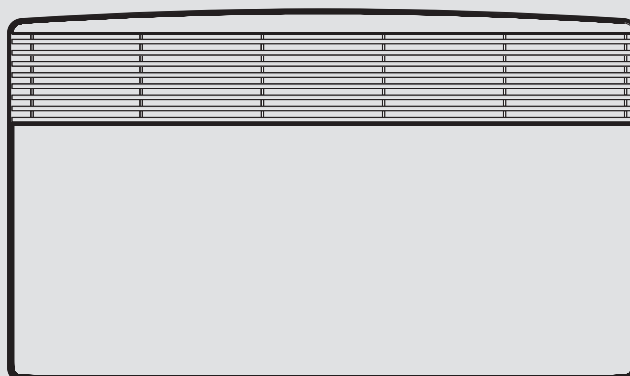


OPERATION AND INSTALLATION

WALL MOUNTED CONVECTOR HEATER

- » CNS 100 A
- » CNS 150 A
- » CNS 200 A
- » CNS 250 A



STIEBEL ELTRON

SPECIAL INFORMATION

OPERATION

1. General information	3
1.1 Document information	3
1.2 Key to symbols	3
2. Safety	3
2.1 Intended use	3
2.2 Safety information	4
2.3 Test symbols	4
3. Appliance description	4
4. Operation	4
4.1 Description of the user interface	4
4.2 Frost protection	5
4.3 Limiting the temperature controller	5
4.4 Shutting down	5
5. Cleaning, care and maintenance	5
6. What to do if ...	5

INSTALLATION

7. Safety	6
7.1 General safety instructions	6
7.2 Instructions, standards and regulations	6
8. Appliance description	6
8.1 Standard delivery	6
9. Installation	6
9.1 Installation with wall mounting bracket	6
10. Appliance handover	7
11. Specification	8
11.1 Dimensions and minimum clearances	8
11.2 Specification table	8

CUSTOMER SERVICE AND WARRANTY

ENVIRONMENT AND RECYCLING

- Keep children under the age of 3 away from the appliance if constant supervision cannot be guaranteed.
- Children from the age of 3 to 7 may switch the appliance on and off, provided they are supervised or have been instructed in the safe operation of the appliance and understand any risks that may result therefrom. This is subject to the appliance having been installed as described. Children from the age of 3 to 7 must not plug the power cable into its socket nor regulate the appliance.
- The appliance may be used by children aged 8 and up and persons with reduced physical, sensory or mental capabilities or a lack of experience and know-how, provided that they are supervised or they have been instructed on how to use the appliance safely and have understood the resulting risks.
- Children must never play with the appliance. Children must never clean the appliance or perform user maintenance unless they are supervised.
- Parts of the appliance can get very hot and may cause burns. Particular caution is advised when children or vulnerable persons are present.
- In order to avoid overheating, do not cover the heater.
- Never install the appliance directly below a wall socket.
- Install the appliance in such a way that the control equipment cannot be touched by a person in the bath or shower.
- In the case of a permanent connection, the appliance must be able to be separated from the power supply by an isolator that disconnects all poles with at least 3 mm contact separation.
- The power cable must only be replaced (for example if damaged) with the original spare part by a qualified electrician authorised by the manufacturer.
- Secure the appliance as described in chapter 9 "Installation".

1. General information

1.1 Document information

The chapter **Operation** is intended for users and heating contractors.

The chapter **Installation** is intended for heating contractors.



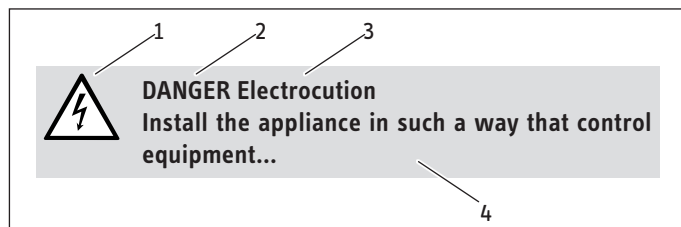
Read these instructions carefully before using the appliance and retain them for future reference. Pass on the instructions to any new users.

1.2 Key to symbols

1.2.1 Layout of safety information

Safety information comprises a warning symbol, a keyword and a text giving information. Safety information is printed on a grey background.

Example:



- 1 Symbol (see chapter on warning symbols/symbols)
- 2 Keyword (see chapter on keywords)
- 3 Description (see chapter on warning symbols/symbols)
- 4 Information text

1.2.2 Keywords

KEYWORD	Description
DANGER	The keyword DANGER indicates information which must be observed, otherwise serious injury or death will result.
WARNING	The keyword WARNING indicates information that must be observed, otherwise serious injury or death may result.
CAUTION	The keyword CAUTION indicates information that must be observed, otherwise relatively serious or light injuries may result.

1.2.3 Warning symbols/symbols

Warning symbol	Description
	Injury
	Electrocution
	Burns or scalding
	Other situations
	Fire
	Never cover the appliance
	Appliance disposal

1.2.4 Text symbols and layout in this documentation



Read the text next to this symbol carefully.

» The "»" symbol indicates that you should do something. The action you need to take is described step by step.

– Passages with the "–" symbol show you lists of items.

1.2.5 Information on the appliance



Never cover the appliance

1.2.6 Units of measurement



The dimensions in this document are given in mm. Any alternative units of measurements are specified accordingly.

2. Safety

2.1 Intended use

This appliance is designed to heat living areas.

This appliance is designed for domestic use. It can be used safely by untrained persons. The appliance can also be used in a non-domestic environment, e.g. in a small business, as long as it is used in the same way.

Any other use beyond that described shall be deemed inappropriate. Observation of these instructions is also part of the correct use of this appliance. Any modifications or conversions to the appliance void all warranty rights.

OPERATION

APPLIANCE DESCRIPTION

2.2 Safety information

Operate the appliance only when fully installed and with all safety equipment fitted.



WARNING Fire

Never operate this appliance ...

- in rooms where the appliance is at risk of fire or explosion as a result of chemicals, dust, gases or vapours.
- in the direct proximity of pipes or receptacles that carry or contain flammable or explosive materials.
- if work such as laying cables, grinding or sealing is carried out in the installation room.
- if sprays, floor polish or similar products containing napsan are used. Vent the room sufficiently before heating.
- if the minimum clearances to adjacent object surfaces are not maintained, for example to furniture, net curtains, curtains, textiles or other flammable materials (for minimum clearances, see specification chapter).
- if an appliance component is damaged, the appliance has fallen over or already had a fault.



WARNING Injury

- Keep children under the age of 3 away from the appliance if constant supervision cannot be guaranteed.
- Children from the age of 3 to 7 may switch the appliance on and off, provided they are supervised or have been instructed in the safe operation of the appliance and understand any risks that may result therefrom. This is subject to the appliance having been installed as described. Children from the age of 3 to 7 must not plug the power cable into its socket nor regulate the appliance.
- The appliance may be used by children aged 8 and up and persons with reduced physical, sensory or mental capabilities or a lack of experience and know-how, provided that they are supervised or they have been instructed on how to use the appliance safely and have understood the resulting risks.
- Children must never play with the appliance. Children must never clean the appliance or perform user maintenance unless they are supervised.



WARNING Fire

Never place any flammable, combustible or insulating objects or materials, such as laundry, blankets, magazines, containers with floor polish or napsan, spray cans or similar on the appliance or in direct proximity to it.



WARNING Burns

The surfaces of the appliance casing and the expelled air become hot during operation (more than 80 °C).



WARNING Overheating

In order to avoid overheating, do not cover the heater.



Never step on the appliance.

CE designation

The CE designation shows that the appliance meets all essential requirements according to the:

- Electromagnetic Compatibility Directive
- Low Voltage Directive

2.3 Test symbols

See type plate.

The type plate is located on the right on the exterior of the appliance.

3. Appliance description

The appliance is an electric direct heater only for installation on a wall.

The appliance is suitable as a full heating system in bathrooms, for example, or for use between seasons and as a booster heater in smaller rooms, such as hobby and guest rooms.

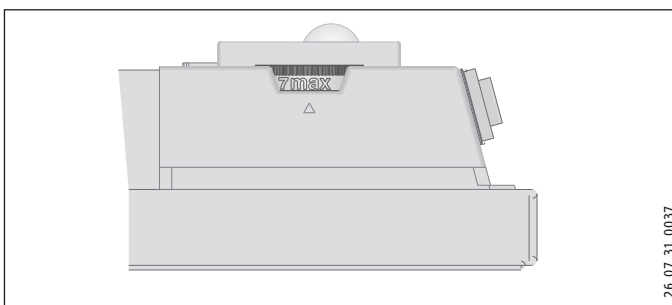
The air in the appliance is heated by a heating element and expelled via natural convection through the air outlet grille at the top. Cool room air flows in through the apertures at the bottom of the appliance.

After mounting the appliance on the wall and making the electrical connection using a mains plug, the appliance is ready for operation.

4. Operation

4.1 Description of the user interface

- » Switch the appliance ON via the switch on the r.h. side of the appliance.
- » Set the required room temperature via the continuously variable temperature selector (for temperatures see specification chapter).



26.07.31_0037

OPERATION

CLEANING, CARE AND MAINTENANCE

As soon as the selected room temperature is reached, it is constantly maintained at this selected temperature through periodic heating (the output of the appliance must correspond at least to the required heat demand of the room).

If several appliances are installed in a single room, the setting at the temperature selector on each appliance can be different.

To avoid excessive power consumption when windows are open, you should stop the appliance while venting.

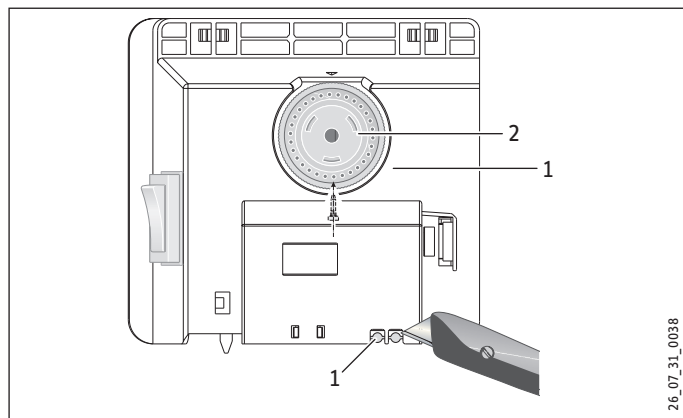
4.2 Frost protection

- » Turn the temperature selector as far to the right as possible. In this position, the temperature controller switches on the heating automatically if the room temperature drops to approx. + 6 °C.

4.3 Limiting the temperature controller

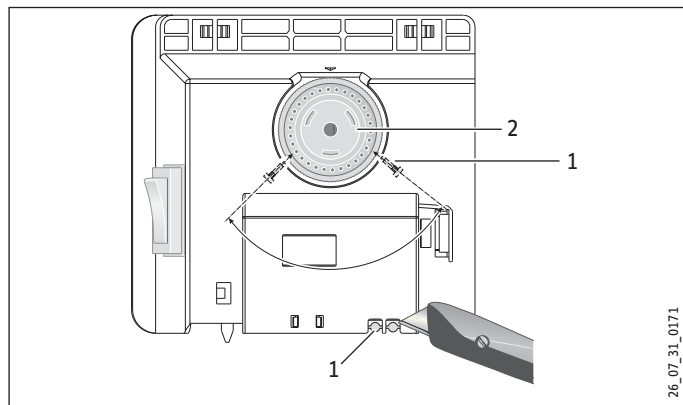
Using the two pins fitted to the back of the control casing, you can fix the temperature controller at a certain setting or limit the temperature setting range.

- » Break out the pins.
- » To fix the selected temperature, push a pin into the hole opposite (see diagram).



- 1 Pin
- 2 Temperature selector

- » To limit the temperature setting range, set the minimum and maximum values at the temperature selector, and push a pin for each into the slightly offset hole opposite (see diagram).



- 1 Pin
- 2 Temperature selector

4.3.1 External room temperature controller

If required, the appliance can be operated on site with a commercially available external room temperature controller.

- » To do this, turn the temperature selector as far to the right as possible.
- » Fit the room thermostat as far from the appliance as possible, at least 1.5 m above the ground.

4.4 Shutting down

- » Move the switch on the right of the appliance to OFF.
- » Pull the mains plug out of the socket.

5. Cleaning, care and maintenance

If a pale brownish discolouration appears on the appliance casing, wipe this off as soon as possible with a damp cloth. Clean the appliance when cold with ordinary cleaning products. Avoid abrasive or corrosive cleaning products.



CAUTION Fire
Never spray cleaning spray into the air slot.
Ensure that no moisture can enter the appliance.

As part of regular maintenance, we recommend also having the control components checked. The safety and control components should be checked by a contractor no more than ten years after commissioning.

6. What to do if ...

... the appliance does not heat up:

Check the temperature set at the appliance and the MCB/fuse in your fuse box.

The appliance has a safety temperature controller that shuts the appliance down if it overheats. After the cause has been removed (for example air outlet or inlet apertures covered) and the appliance has cooled down for a few minutes, operation starts again.

If you cannot remedy the fault, contact your contractor. To facilitate and speed up your enquiry, please provide the number on the type plate (no. XXXXXX - XXXX - XXXXXX):

7. Safety

Only qualified contractors should carry out installation, commissioning, maintenance and repair of the appliance.

7.1 General safety instructions

We guarantee trouble-free function and operational reliability only if the original accessories and spare parts intended for the appliance are used.



DANGER Electrocution

If you mount the appliance on the wall, do so in such a way that control equipment cannot be touched by a person in the bath or shower.



CAUTION

- Only fit the wall mounted appliance to a vertical wall that is temperature-resistant to at least 85 °C.
- Observe the minimum clearances to adjacent object surfaces (for minimum clearances see specification chapter).
- Never install the appliance directly below a wall socket.
- Ensure that the power cable is not in contact with any appliance components.

7.2 Instructions, standards and regulations



Observe all applicable national and regional regulations and instructions.



Observe the Building and Garage Regulations [or local regulations].

8. Appliance description

8.1 Standard delivery

- Wall mounting bracket (hooked into the appliance)

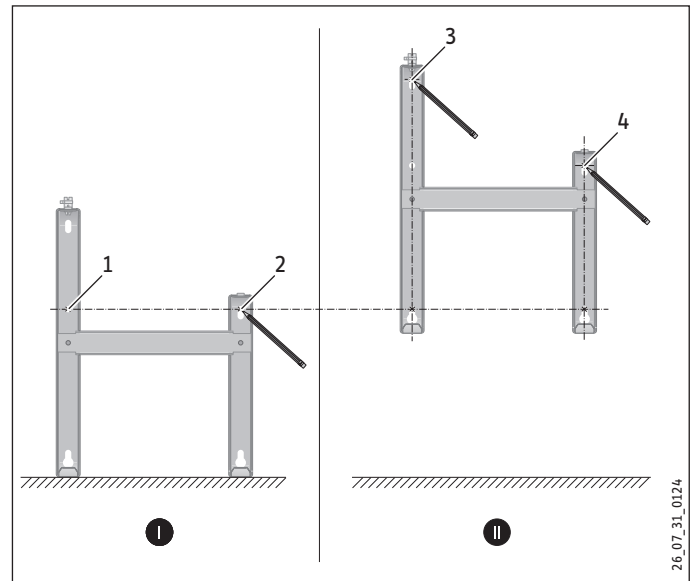
9. Installation

9.1 Installation with wall mounting bracket

9.1.1 Installing the wall mounting bracket

You can also use the wall mounting bracket as a template for wall mounting; this ensures the required floor clearance.

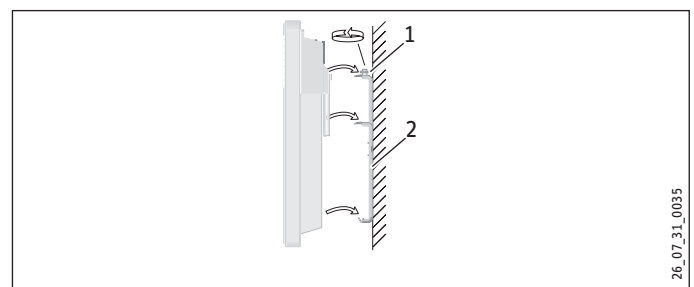
- » Unhook the wall mounting bracket.
- » Place the centred wall mounting bracket level on the ground and mark holes 1 and 2.
- » Lift up the wall mounting bracket so that its lower holes match up with the markings you have just made on the installation wall.
- » Mark holes 3 and 4 on the installation wall.



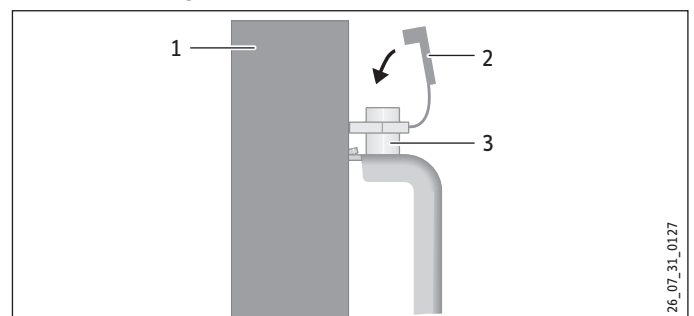
- » Drill holes at all four markings. Secure the wall mounting bracket with suitable materials (screws, rawl plugs) depending on the type of wall. With the vertical slots, you can compensate for an offset fixing hole.

9.1.2 Appliance installation

- » Hook the appliance by its slots in the back of the appliance on to all four tabs of the wall mounting bracket simultaneously.
- » Push the appliance to latch it in position.
- » Turn the locking bolt in the wall mounting bracket fully clockwise; this locks the appliance in place.
- » Push the safety cap onto the locking bolt to prevent it from loosening.



- 1 Locking bolt
- 2 Wall mounting bracket



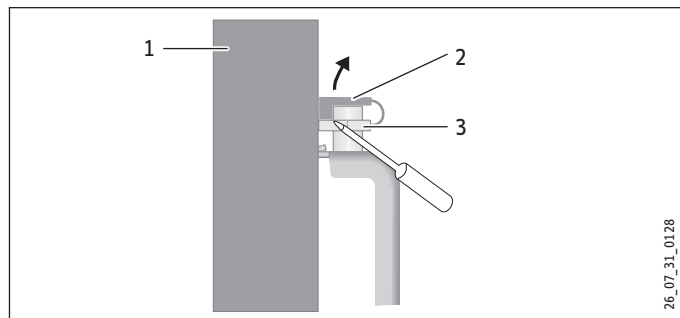
- 1 Appliance
- 2 Safety cap
- 3 Locking bolt

INSTALLATION

APPLIANCE HANDOVER

9.1.3 Dismounting the appliance

- » Remove the safety cap from the locking bolt.



- 1 Appliance
- 2 Safety cap
- 3 Locking bolt

- » Undo the locking bolt on the wall mounting bracket.
- » Lift the appliance up slightly and pull it forwards and away from the wall mounting bracket.

9.1.4 Power supply

- » Ensure the on-site supply cable has an adequate cross-section.
- » Ensure a socket or junction box for a permanent power supply is installed at a distance of at least 10 cm from the side of the appliance.



DANGER Electrocutation!
Carry out all electrical connection and installation work in accordance with relevant regulations.



DANGER Electrocutation!
The appliance must be able to be separated from the mains power supply by an isolator that disconnects all poles with at least 3 mm contact separation.



DANGER Electrocutation!
Do not install the appliance with a fixed power cable.



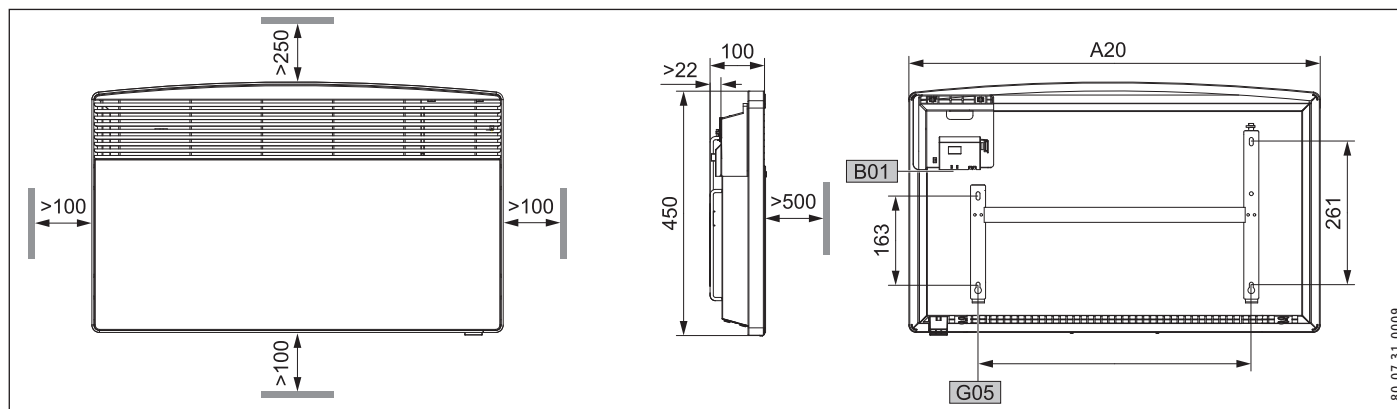
Observe the type plate. The specified voltage must match the mains voltage.

10. Appliance handover

Explain the functions of the appliance to the user. Draw special attention to the safety information. Hand the operating and installation instructions to the user.

11. Specification

11.1 Dimensions and minimum clearances



				CNS 100 A	CNS 150 A	CNS 200 A	CNS 250 A
	Appliance	Height	mm	450			
A20	Appliance	Width	mm	445	590	740	890
	Appliance	Depth	mm	100			
	Appliance	Minimum top clearance	mm	250			
	Appliance	Minimum bottom clearance	mm	100			
	Appliance	Minimum r.h. clearance	mm	100			
	Appliance	Minimum l.h. clearance	mm	100			
	Appliance	Minimum front clearance	mm	500			
	Appliance	Minimum rear clearance	mm	22			
B01	Electrical cable entry						
G05	Wall mounting bracket	Hole spacing	mm	195	343	491	639

11.2 Specification table

		CNS 100 A	CNS 150 A	CNS 200 A	CNS 250 A
		220734	220735	220736	220737
Connection output	kW	1,0	1,5	2,0	2,4
Setting range	°C	7-30	7-30	7-30	7-30
Frost protection setting	°C	7	7	7	7
Power connection		1/N~220-240 V	1/N~220-240 V	1/N~220-240 V	1/N~240 V
Height	mm	450	450	450	450
Width	mm	445	590	740	890
Depth	mm	100	100	100	100
Weight	kg	4,4	5,7	6,8	8,1
IP-Rating		IP24	IP24	IP24	IP24
Protection class		II	II	II	II
Colour		Alpine white	Alpine white	Alpine white	Alpine white

AUSTRALIA

CUSTOMER SERVICE AND WARRANTY

Stiebel Eltron Warranty for Hand Dryers & Space Heaters – Models HTE, ULTRONIC, CNS, CK & CK Z.

Who gives the warranty

1. The warranty is given by Stiebel Eltron (Aust) Pty Ltd (A.B.N. 82 066 271 083), 294 Salmon Street, Port Melbourne, Victoria, 3207 (“we”, “us” or “our”).

The warranty

2. This warranty applies to Stiebel Eltron Hand Dryers and Space Heaters – Models HTE 4, HTE 5, ULTRONIC, CNS 100, CNS 150, CNS 200, CNS 250, CK 20S and CKZ 20S (the “unit”) manufactured after 1 January 2012.

3. Subject to the warranty exclusions we will repair or replace, at our absolute discretion, a faulty component in your unit free of charge if it fails to operate in accordance with its specifications during the warranty period.

4. If we repair or replace a faulty component to your unit under this warranty, the warranty period is not extended from the time of the repair or replacement.

5. The warranty period commences on the date of purchase of the unit. Where the date of purchase is not known, then the warranty period will commence 2 months after the date of manufacture.

6. The warranty period for a unit is shown in the table below.

Component	Warranty period
All components	5 years from the date of purchase of the unit.

Your entitlement to make a warranty claim

7. You are entitled to make a warranty claim if:

7.1. you own the unit or if you have the owner’s consent to represent the owner of the unit;

7.2. you contact us within a reasonable time of discovering the problem with the unit;

How you make a warranty claim

8. To make a warranty claim you must provide us with the following information:

8.1. The model number of the unit;

8.2. A description of the problem with the unit;

8.3. The name, address and contact details (such as phone number and e-mail address) of the owner;

8.4. The address where the unit is installed and the location (e.g. in living room);

8.5. The serial number of the unit;

8.6. The date of purchase of the unit and the name of the seller of the unit;

8.7. The date of installation of the unit where appropriate;

8.8. A copy of the certificate of compliance when the unit was installed where appropriate.

9. The contact details for you to make your warranty claim are:

Name: Stiebel Eltron (Aust) Pty Ltd

Address: 294 Salmon Street,
Port Melbourne,
Victoria, 3207

Telephone: 1800 153 351
(8.00 am to 5.00 pm AEST Monday to Friday)

Contact person: Customer Service Representative

E-mail: service@stiebel-eltron.com.au

10. We will arrange a suitable time with you to inspect and test the unit.

Warranty exclusions

11. We may reject your warranty claim if:

11.1. The unit was not installed by registered and qualified tradespeople, where required.

11.2. The unit was not installed and commissioned:

(a) in Australia;

(b) in accordance with the Operating and Installation Guide; and

(c) in accordance with the relevant statutory and local requirements of the State or Territory in which the unit is installed.

11.3. The unit has not been operated or maintained in accordance with the Operating and Installation Guide.

11.4. The unit does not bear its original Serial Number or Rating Label.

11.5. The unit was damaged by any or any combination of the following:

(a) normal fair wear and tear;

(b) connection to an incorrect power supply;

(c) connection to faulty equipment, such as faulty circuit breaker;

(d) accidental damage;

(e) act of God, including damage by flood, storm, fire, lightning strike and the like;

(f) wiring not to AS3000 Standards;

(g) ingress of vermin.

11.6. The unit was damaged before it was installed e.g. it was damaged in transit.

11.7. An unauthorised person has modified, serviced, repaired or attempted to repair the unit without our consent.

11.8. Non genuine parts other than those manufactured or approved by us have been used on the unit.

12. We may charge you:

12.1. for any additional transport costs if the unit is installed more than 30 kilometres from our closest authorised service technician.

12.2. for the extra time it takes our authorised service technician to access the unit for inspection and testing if it is not sited in accordance with the Operating and Installation Guide and not readily accessible for inspection.

12.3. for any extra costs of our authorised service technician to make the unit safe for inspection.

13. You must ensure that access to the unit by our authorised service technician is safe and free from obstruction.

14. Our authorised service technician may refuse to inspect and test the unit until you provide safe and free access to it, at your cost.

15. If we reject your warranty claim in accordance with clause 11, we may charge you for our authorised service technician's labour costs to inspect and test the unit.

16. In order to properly test the unit we may remove it to another location for testing.

Australian Consumer Law

17. Our goods come with guarantees that cannot be excluded under the Australian Consumer Law. You are entitled to a replacement or refund for a major failure and compensation for any other reasonably foreseeable loss or damage. You are also entitled to have the goods repaired or replaced if the goods fail to be of acceptable quality and the failure does not amount to a major failure.

18. The Stiebel Eltron warranty for the unit is in addition to any rights and remedies you may have under the Australian Consumer Law.

Guarantee

The guarantee conditions of our German companies do not apply to appliances acquired outside of Germany. In countries where our subsidiaries sell our products a guarantee can only be issued by those subsidiaries. Such guarantee is only granted if the subsidiary has issued its own terms of guarantee. No other guarantee will be granted.

We shall not provide any guarantee for appliances acquired in countries where we have no subsidiary to sell our products. This will not affect warranties issued by any importers.

Environment and recycling

We would ask you to help protect the environment. After use, dispose of the various materials in accordance with national regulations.

NOTES

Deutschland

STIEBEL ELTRON GmbH & Co. KG
Dr.-Stiebel-Straße 33 | 37603 Holzminden
Tel. 05531 702-0 | Fax 05531 702-480
info@stiebel-eltron.de
www.stiebel-eltron.de

Verkauf

Tel. 05531 702-110 | Fax 05531 702-95108 | info-center@stiebel-eltron.de

Kundendienst

Tel. 05531 702-111 | Fax 05531 702-95890 | kundendienst@stiebel-eltron.de

Ersatzteilverkauf

Tel. 05531 702-120 | Fax 05531 702-95335 | ersatzteile@stiebel-eltron.de

Australia

STIEBEL ELTRON Australia Pty. Ltd.
6 Prohasky Street | Port Melbourne VIC 3207
Tel. 03 9645-1833 | Fax 03 9645-4366
info@stiebel.com.au
www.stiebel.com.au

Austria

STIEBEL ELTRON Ges.m.b.H.
Gewerbegebiet Neubau-Nord
Margaritenstraße 4 A | 4063 Hörsching
Tel. 07221 74600-0 | Fax 07221 74600-42
info@stiebel-eltron.at
www.stiebel-eltron.at

Belgium

STIEBEL ELTRON bvba/sprl
't Hofveld 6 - D1 | 1702 Groot-Bijgaarden
Tel. 02 42322-22 | Fax 02 42322-12
info@stiebel-eltron.be
www.stiebel-eltron.be

China

STIEBEL ELTRON (Guangzhou) Electric
Appliance Co., Ltd.
Rm 102, F1, Yingbin-Yihao Mansion, No. 1
Yingbin Road
Panyu District | 511431 Guangzhou
Tel. 020 39162209 | Fax 020 39162203
info@stiebeleltron.cn
www.stiebeleltron.cn

Czech Republic

STIEBEL ELTRON spol. s r.o.
K Hájem 946 | 155 00 Praha 5 - Stodůlky
Tel. 251116-111 | Fax 235512-122
info@stiebel-eltron.cz
www.stiebel-eltron.cz

Finland

STIEBEL ELTRON OY
Kapinakuja 1 | 04600 Mäntsälä
Tel. 020 720-9988
info@stiebel-eltron.fi
www.stiebel-eltron.fi

France

STIEBEL ELTRON SAS
7-9, rue des Selliers
B.P 85107 | 57073 Metz-Cédex 3
Tel. 0387 7438-88 | Fax 0387 7468-26
info@stiebel-eltron.fr
www.stiebel-eltron.fr

Hungary

STIEBEL ELTRON Kft.
Gyár u. 2 | 2040 Budaörs
Tel. 01 250-6055 | Fax 01 368-8097
info@stiebel-eltron.hu
www.stiebel-eltron.hu

Japan

NIHON STIEBEL Co. Ltd.
Kowa Kawasaki Nishiguchi Building 8F
66-2 Horikawa-Cho
Saiwai-Ku | 212-0013 Kawasaki
Tel. 044 540-3200 | Fax 044 540-3210
info@nihonstiebel.co.jp
www.nihonstiebel.co.jp

Netherlands

STIEBEL ELTRON Nederland B.V.
Daviottenweg 36 | 5222 BH 's-Hertogenbosch
Tel. 073 623-0000 | Fax 073 623-1141
info@stiebel-eltron.nl
www.stiebel-eltron.nl

Poland

STIEBEL ELTRON Polska Sp. z O.O.
ul. Działkowa 2 | 02-234 Warszawa
Tel. 022 60920-30 | Fax 022 60920-29
biuro@stiebel-eltron.pl
www.stiebel-eltron.pl

Russia

STIEBEL ELTRON LLC RUSSIA
Urzhumskaya street 4,
building 2 | 129343 Moscow
Tel. 0495 7753889 | Fax 0495 7753887
info@stiebel-eltron.ru
www.stiebel-eltron.ru

Slovakia

TATRAMAT - ohrievače vody s.r.o.
Hlavná 1 | 058 01 Poprad
Tel. 052 7127-125 | Fax 052 7127-148
info@stiebel-eltron.sk
www.stiebel-eltron.sk

Switzerland

STIEBEL ELTRON AG
Industrie West
Gass 8 | 5242 Lupfig
Tel. 056 4640-500 | Fax 056 4640-501
info@stiebel-eltron.ch
www.stiebel-eltron.ch

Thailand

STIEBEL ELTRON Asia Ltd.
469 Moo 2 Tambol Klong-Jik
Amphur Bangpa-In | 13160 Ayutthaya
Tel. 035 220088 | Fax 035 221188
info@stiebeleltronasia.com
www.stiebeleltronasia.com

United Kingdom and Ireland

STIEBEL ELTRON UK Ltd.
Unit 12 Stadium Court
Stadium Road | CH62 3RP Bromborough
Tel. 0151 346-2300 | Fax 0151 334-2913
info@stiebel-eltron.co.uk
www.stiebel-eltron.co.uk

United States of America

STIEBEL ELTRON, Inc.
17 West Street | 01088 West Hatfield MA
Tel. 0413 247-3380 | Fax 0413 247-3369
info@stiebel-eltron-usa.com
www.stiebel-eltron-usa.com

STIEBEL ELTRON



Irrtum und technische Änderungen vorbehalten! | Subject to errors and technical changes! | Sous réserve d'erreurs et de modifications techniques! | Onder voorbehoud van vergissingen en technische wijzigingen! | Salvo error o modificación técnica! | Excepto erro ou alteração técnica | Zastrzeżone zmiany techniczne i ewentualne błędy | Omyly a technické změny jsou vyhrazeny! | A muszaki változtatások és tévedések jogát fenntartjuk! | Отсутствие ошибок не гарантируется. Возможны технические изменения. | Chyby a technické zmeny sú vyhradené!

Stand 9147

A 265846-39970-9251
B 265848-39970-9251